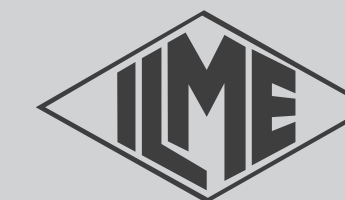
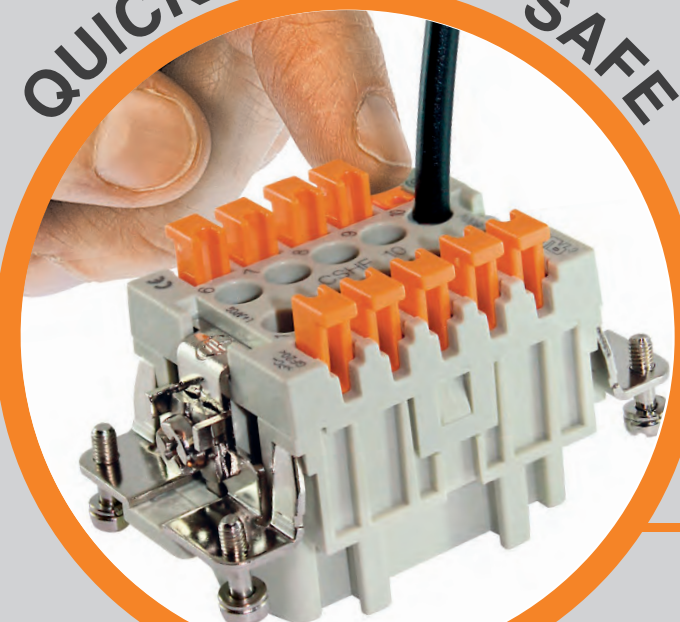




# CHOOSE YOUR CONNECTOR



QUICK SIMPLE SAFE



**CDS - 10A**  
SPRING CONNECTION

**CSH-SQUICH®**  
QUICK CONNECTION  
WITHOUT TOOLS

HIGH DENSITY SPRING CONNECTION

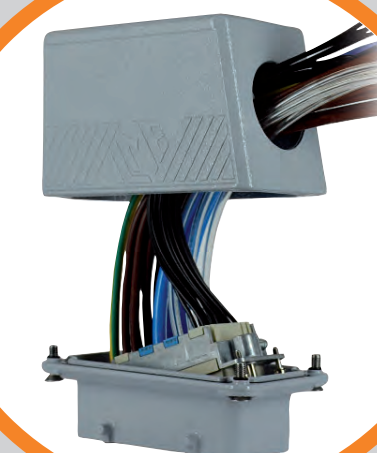


STRONG RESISTANT COST-EFFECTIVE

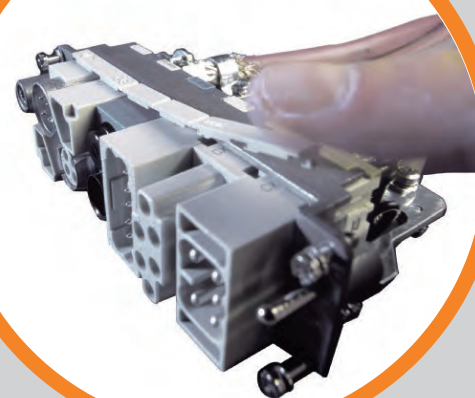


**T-TYPE**  
INSULATING ENCLOSURES

NEW



**MIXO - EASY ASSEMBLY**  
WIDE RANGE OF COMBINATIONS



**BIG**  
LARGE MODULAR HOODS

**CQ12 - COMPACT SOLUTIONS**  
FOR HIGH DENSITY



**C-TYPE**  
FLEXIBLE



**MIXO - 70A/100A/200A**  
WITH CRIMP CONTACTS



**C7 - IP67**  
V-TYPE VERTICAL CLOSING

**JEI® - TIN PLATED CONTACTS**  
GALVANISED STEEL LEVERS



**180 °C**  
FOR HIGH TEMPERATURES



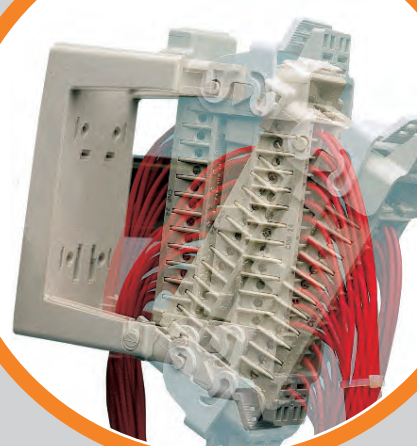
**CKS - 400V**  
SPRING VERSION



**GASKETS**  
A PERFECT FIT



**COB**  
EASY TO USE



**LS-TYPE - CONNECTION**  
FOR STAGE EQUIPMENT

